



Feel wood

Index

- 01. **Floating floors** - p.12
- 02 **Solid flooring** - p.44
- 03. **External flooring** - p.50
- 04. **Sport flooring** - p.52
- 05. **Technical characteristics** - p. 58

Total solution in wood flooring



Live the wood

More than 50 years dedicated exclusively to the manufacture of wooden flooring means we can innovate, produce 1,000,000m² annually and export our wide range of products worldwide.



Optimax ceramic

30 years ago, IMA was the first manufacturer in the world to apply its own Optimax ceramic varnish to wooden flooring. Optimax ceramic is highly resilient, flame retardant and, being water solvent, it is totally innocuous and environmentally friendly. We continue renewing the product, pioneering invisible varnish. It does not alter the natural tone and feel of the wood.

OPTIMAX





Feel the wood

IMA - wood as a way of life.

We are proud to have grown thanks to wood - a natural, comfortable, healthy and ecological material. For IMA wood is work and way of life. We treat the material with respect so that the end consumer enjoys the natural values of the product.

IMA is:

- Experience** - working wood since 1961.
- Product** - multiple range of species and finishes.
- Resistance** - IMA's own Optimax Ceramic varnish.
- Exclusivity** - natural product. Each board is unique.
- Solutions** - wood to enjoy every day: home, contract, exterior, sports facilities.
- Flexibility** - capacity to produce and adapt.
- Sustainability** - care of the environment and human health.

Home

Unique, comfortable homes

IMA floating flooring is the best option to create a unique and comfortable home. Natural wood is the basis of Nordic style because the natural material enhances the feeling of warmth and tranquillity. It adapts to all functions, designs and installations. Wood is an excellent thermal and acoustic insulator which contributes to both comfort and energy savings. It does not produce allergic reactions and is antistatic. It is a resistant material that retains its natural beauty with minimal maintenance. It adapts to all functions, designs and installations so you can floor your entire home with IMA wood. From the bathroom to the terrace.

And why IMA?

11 Advantages



- 1 Comfortable and unique
- 2 Warmth and tranquillity
- 3 Design and decoration
- 4 Thermal and acoustic insulation
- 5 Energy saving
- 6 Antiallergic and antistatic
- 7 Resistant
- 8 Basic maintenance
- 9 Durability
- 10 Polyvalence
- 11 Respect for the environment



IMA FEELING WOOD SINCE 1961

Contract

Durability and resistance

In a competitive world each brand and workspace must have a unique identity that generates a positive user experience. IMA Flooring creates comfortable environments to enhance the productivity of professionals working in offices thanks to the simplicity and warmth of wood. In shops and hotels, the wide range of IMA products helps create unique spaces that invite customers to return. IMA also produces sports flooring, synonymous with the resistance provided by the exclusive OPTIMAX CERAMIC.

Floating Floors

Different species of wood to create unique environments



Find yours:



OAK



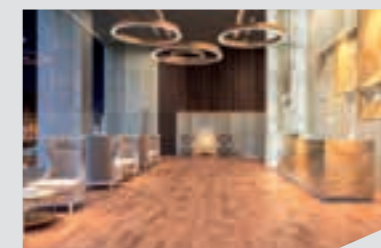
BEECH



ASH



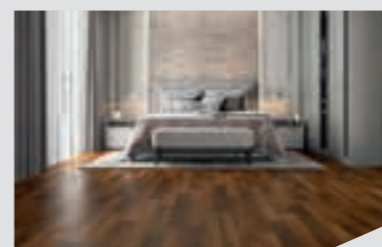
MAPLE



CHERRY



PINE



TEAK



MERBAU



JATOBA



IPE



SUCUPIRA



MASSARANDUBA

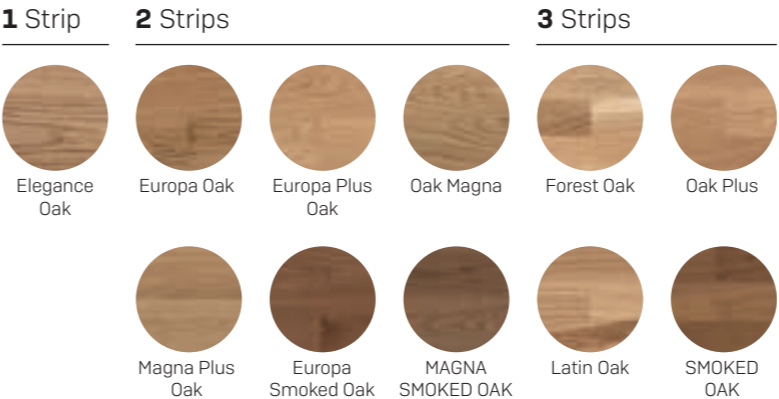


TAUARI



Oak

Oak is found throughout southern and central Europe, Canada, in the southern Scandinavian countries, England, Ireland and in the East to Turkey. Light coloured, well-differentiated sapwood and variably coloured heartwood (from light yellowish-brown to brown). Straight fibre and rough, irregular texture.



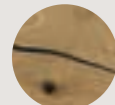
Species and qualities

SPECIES AND QUALITY	NUMBER OF BOARDS ALONG FLOOR	NUMBER OF BOARDS ON FLOOR	QUALITY FEATURES
FOREST OAK	Multiples	3	Admits colour variations, sapwood and knots.
LATIN OAK	Multiples	3	Admits colour variations, sapwood. No knots
OAK PLUS	Multiples	3	Even colour. No sapwood. No knots
EUROPA OAK	2-3	2	Admits colour variations, sapwood and knots
EUROPA PLUS OAK	2-3	2	Even colour. No sapwood. No knots
MAGNA OAK	1	2	Admits colour variations, sapwood and knots.
MAGNA PLUS OAK	1	2	Even colour. No sapwood. No knots
SMOKED OAK	Multiples	3	Stained wood. Admits sapwood and knots.
EUROPA SMOKED OAK	2-3	2	Stained wood. Admits sapwood and knots.
MAGNA SMOKED OAK	1	2	Stained wood. Admits sapwood and knots.
ELEGANCE OAK	1	1	Admits colour variations, sapwood and low percentage of knots.

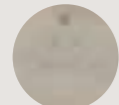
*Technical characteristics on p.58

Vintage oak

Hand manufactured by IMA. *L'artisan de Paris* is specialized in the manufacture of large-format, micro-bevelled oak parquets custom finished with wax oil for high traffic. Open from the first moment to your suggestions and tastes, to create unique products as a team, according to the environment and decoration required by each client.



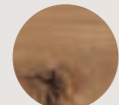
Moonstone



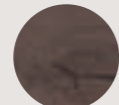
River stone



Ocean wood



House Spirit



Sepia

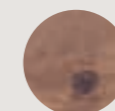




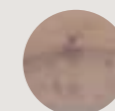
Solid oak



The solid oak range brings a contemporary touch to a traditional style. 10 colours, 2 widths of micro-bevels and 2 selections are the ideal combination to reflect the eternal charm of the oak. Solid, contemporary style with infinite possible combinations. Colours for all environments.



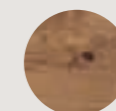
Chocolate



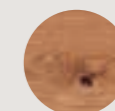
Salt flower



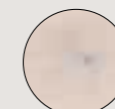
Natural white pore



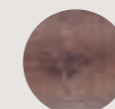
[Smoked]



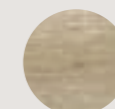
[Natural]



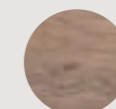
[Mist]



Sienna



Titanium white pore



Titanium



Invisible varnish

Pre-oiled solid oak

Solid oak floors, extremely natural,
without micro-bevel, finished with UV oil.
Rustic with a touch of design.





Classic oak

Oak in 1, 2 and 3 varnished strips that provide a light, fresh style. Floor composed of different format strips that adapt to any space and create different visual expressions.



Beech

Beech grows throughout central and western Europe, southern England and Scandinavia. Colour ranging from yellowish white pink to light red with undistinguishable heart and sapwood. Fine grain, even structure and straight fibre.

1 Strip 3 Strips



Species and qualities

SPECIES AND QUALITY	NUMBER OF BOARDS ALONG FLOOR	NUMBER OF BOARDS ON FLOOR	QUALITY FEATURES
LATIN BEECH	Multiples	3	Light tone. Admits colour variations.
VAPORIZED LATIN BEECH	Multiples	3	Select, uniformly coloured wood. Vaporized
FOREST BEECH	Multiples	3	Admits colour variations within the same board and knots.
ELEGANCE BEECH	1	1	Select, uniformly coloured wood. Vaporized

*Technical characteristics on p.58





Ash

Ash is present throughout Europe except in Mediterranean areas. Pale yellow wood with undistinguishable heart and sapwood. Heterogeneous texture, medium grain and well marked rings, sometimes it has dark streaks in the longitudinal cuts.

3 Strips



LATIN ASH

Species and qualities

SPECIES AND QUALITY	NUMBER OF BOARDS ALONG FLOOR	NUMBER OF BOARDS ON FLOOR	QUALITY FEATURES
LATIN ASH	Multiples	3	Light tone. Admits colour variations

**Technical characteristics on p.58*

Maple

Species implanted in central Europe and western Asia - white or light yellow. The wooden spokes are visible and appear in the form of very thin and decorative stripes. The grain is fine and the fibre can be straight or wavy.

1 Strip 2 Strips 3 Strips



Maple Elegance



Europa Plus Maple



Forest Maple



Latin Maple



Maple plus

Species and qualities

SPECIES AND QUALITY	NUMBER OF BOARDS ALONG FLOOR	NUMBER OF BOARDS ON FLOOR	QUALITY FEATURES
LATIN MAPLE (Canadian)	Multiples	3	Light tone. Admits colour variations.
MAPLE PLUS (Canadian)	Multiples	3	First selection. Light tone. Admits colour variations.
FOREST MAPLE (Canadian)	Multiples	3	Admits colour variations and mix of sapwood and heartwood.
EUROPA PLUS MAPLE (European)	2-3	2	First selection. Light tone.
ELEGANCE MAPLE (Canadian)	1	1	Light tone. Admits colour variations.

*Technical characteristics on p.58





Cherry

Species present throughout Europe, East Asia and North Africa. The heartwood is pale pinkish-brown and the sapwood is lighter. It has a lustrous veining and the growth rings are well differentiated - straight fibre and fine grain.

2 Strips 3 Strips



Europa Cherry



Cherry Plus



Latin Cherry

Species and qualities

SPECIES AND QUALITY	NUMBER OF BOARDS ALONG FLOOR	NUMBER OF BOARDS ON FLOOR	QUALITY FEATURES
LATIN CHERRY	Multiples	3	Even, pale pink-brown. Admits sapwood and small knots.
CHERRY PLUS	Multiples	3	Even, pale pink-brown, no sapwood or knots.
EUROPA CHERRY	2-3	2	Even, pale pink-brown. Admits sapwood and small knots.

**Technical characteristics on p.58*

Pine

Species from the southeast of the United States and Central America. Differential whiteness from yellowish white to light orange or pale yellow. Wood with straight fibre and coarse grain.

2 Strips



Pine Europe

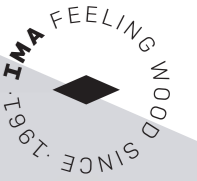


Magna Pine

Species and qualities

SPECIES AND QUALITY	NUMBER OF BOARDS ALONG FLOOR	NUMBER OF BOARDS ON FLOOR	QUALITY FEATURES
EUROPEAN PINE	2-3	2	Mottled yellow tone. Admits knots.
MAGNA PINE	1	2	Mottled yellow tone. Admits knots.

**Technical characteristics on p.58*





Teak

Species from Southeast Asia, India and forest cultivation in the tropical regions of West Africa and Central America. Sapwood is a clearly distinguishable yellow. Olive green heartwood that turns golden brown when exposed. Straight or wavy fibre depending on the provenance. Thick texture and well differentiated rings.

2 Strips



Europa Teak

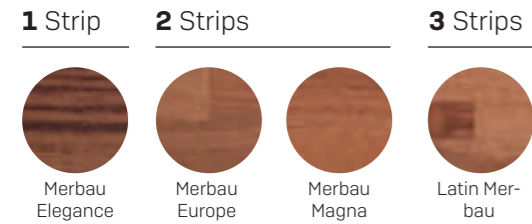
Species and qualities

SPECIES AND QUALITY	NUMBER OF BOARDS ALONG FLOOR	NUMBER OF BOARDS ON FLOOR	QUALITY FEATURES
EUROPA TEAK (Burma)	2-3	2	Tobacco brown tone. Admits colour variations.

**Technical characteristics on p.58*

Merbau

Species that comes from Southeast Asia and Oceania. Smooth pale yellow, sometimes with greenish reflections and heartwood that varies from bronze brown to dark brown. The wood darkens on exposure to light. The fibre is straight or interlaced and coarse-grained.



Species and qualities

SPECIES AND QUALITY	NUMBER OF BOARDS ALONG FLOOR	NUMBER OF BOARDS ON FLOOR	QUALITY FEATURES
LATIN MERBAU	Multiples	3	Reddish-brown tone. Admits colour variations.
MERBAU EUROPE	2-3	2	Reddish-brown tone. Admits colour variations.
MERBAU MAGNA	1	2	Reddish-brown tone. Admits colour variations.
MERBAU ELEGANCE	1	1	Reddish-brown tone. Even colour.

*Technical characteristics on p.58





Jatoba

Species widely distributed throughout Central America and Amazonia. Pink and white sapwood and beige and reddish brown heartwood with dark streaks. With time it darkens and acquires dark red-brown tones. Irregular grain, wavy fibre and coarse texture.

1 Strip



Elegance
Jatoba

2 Strips



Europa
Jatoba

3 Strips



Magna
Jatoba



Latin
Jatoba

Species and qualities

SPECIES AND QUALITY	NUMBER OF BOARDS ALONG FLOOR	NUMBER OF BOARDS ON FLOOR	QUALITY FEATURES
JATOBA LATINA	Multiples	3	Reddish hue Admits colour variations.
EUROPA JATOBA	2-3	2	Reddish hue Admits colour variations.
MAGNA JATOBA	1	2	Reddish hue Admits colour variations.
ELEGANCE JATOBA	1	1	Reddish hue Even colour.

**Technical characteristics on p.58*

Ipe

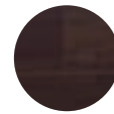
Wood species found in Central and South America. The highest grade wood of this species grows in the Amazon area. It is distinguished by its light brown colour with yellowish or greenish reflections. The narrow, yellowish white sapwood is distinct from the heartwood. With a fine texture and irregular grain, it has a matt surface and is smooth to the touch.

1 Strip

2 Strips



Elegance Ipe



Europa Ipe

Species and qualities

SPECIES AND QUALITY	NUMBER OF BOARDS ALONG FLOOR	NUMBER OF BOARDS ON FLOOR	QUALITY FEATURES
EUROPA IPE	2-3	2	Brown, dark brown and extra dark. Possibility of colour variations.
ELEGANCE IPE	1	1	Brown, dark brown and extra dark. Possibility of colour variations.

*Technical characteristics on p.58





Sucupira

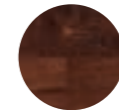
Wood found in the tropical zone of South America. The colour of the wood varies from dark brown to reddish-brown and the sapwood is grey-white or yellow-white. It may present fine streaks of a lighter colour. The fibre can be straight or interwoven with medium grain.

1 Strip

2 Strips



Elegance
SUCUPIRA



EUROPA
SUCUPIRA

Species and qualities

SPECIES AND QUALITY	NUMBER OF BOARDS ALONG FLOOR	NUMBER OF BOARDS ON FLOOR	QUALITY FEATURES
EUROPA SUCUPIRA	2-3	2	Dark Brown Tone Possibility of colour variations.
ELEGANCE SUCUPIRA	1	1	Dark Brown Tone Possibility of colour variations.

*Technical characteristics on p.58

Massaranduba

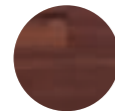
Species distributed throughout Central and South America, especially throughout the Amazonian strip. Heartwood is uniform red-pink and darkens with time. Beige ribbed sapwood is distinguishable. Medium uniform texture, straight grain and smooth to touch.

1 Strip



Elegance Massaranduba

2 Strips



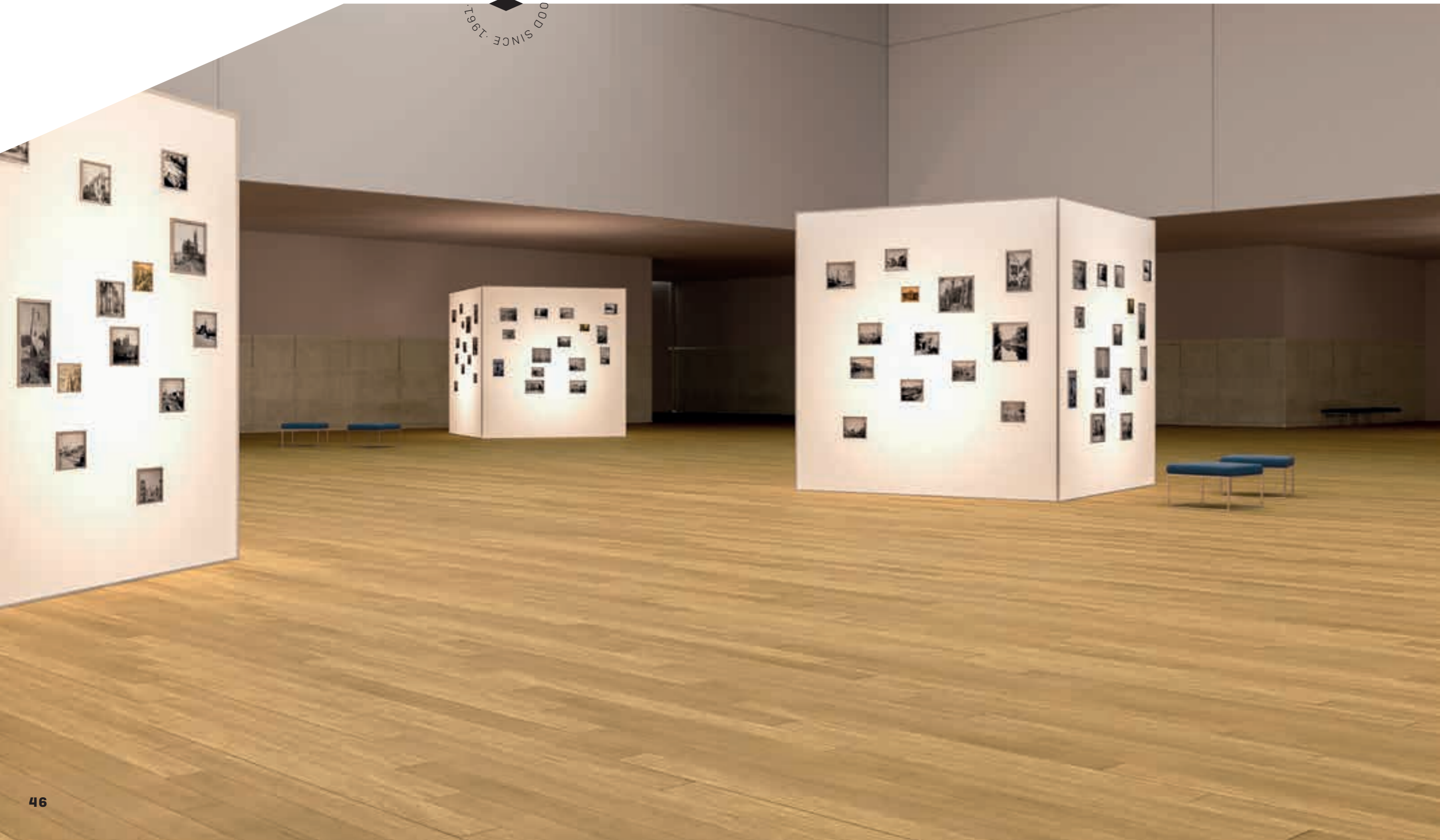
EUROPA MASSARANDUBA

Species and qualities

SPECIES AND QUALITY	NUMBER OF BOARDS ALONG FLOOR	NUMBER OF BOARDS ON FLOOR	QUALITY FEATURES
EUROPA MASSARANDUBA	2-3	2	Even reddish tone. Admits colour variations.
ELEGANCE MASSARANDUBA	1	1	Even reddish tone.

*Technical characteristics on p.58





Tauari

Wood species distributed throughout South America. The heart and sapwood are not differentiated. Yellowish white and slightly pink, medium texture, straight grain and fibre with a fine, slightly silky surface.

1 Strip 2 Strips



Elegance
Tauari



EUROPA
TAUARI



Toasted
Elegance
Tauari



Toasted
Europa
Tauari



Elegance
white Tauari



White
Europa
Tauari



Elegance
grey Tauari



EUROPA
TAUARI
Gray

Species and qualities

SPECIES AND QUALITY	NUMBER OF BOARDS ALONG FLOOR	NUMBER OF BOARDS ON FLOOR	QUALITY FEATURES
EUROPA TAUARI	2-3	2	Dark Brown Tone Possibility of colour variations.
ELEGANCE TAUARI	1	1	Dark Brown Tone Possibility of colour variations.

**Technical characteristics* on p.58

Solid Floors



BEECH



IPE



JATOBA



MASSARANDUBA



MERBAU



OAK



SUCUPIRA



TAUARI

Only for
wood
romantics

SOLID, MICROBEVELLED, "OPTIMAX-CERAMIC" VARNISHED FLOOR

Measurements: 21 x 95-100 mm.
Length: 400/1600 mm
Woods: Oak, Jatoba, Sucupira, Massaranduba, Ipe, Tauari and Merbau.

SOLID, MICROBEVELLED, "OPTIMAX-CERAMIC" VARNISHED BOTH SIDES PLATFORM

Measurements: 20 x 150 mm
Length: 400/2000 mm
Woods: Oak, Jatoba, Sucupira, Massaranduba, Ipe, Vaporized Beech, Merbau and Tauari.

Oak



Merbau



Beech



Jatoba



Ipe



Sucupira



Massaranduba



Tauari





03

Outdoor floors

Decorative
and functional

IMA's outdoor floors provide style, class and comfort to exterior spaces of all types. This versatility and resistance means that there is no environment that our flooring cannot enrich and personalise.

*Available species:
Ipe, Massaranduba and Sucupira.*



Sport floors

Safety and durability

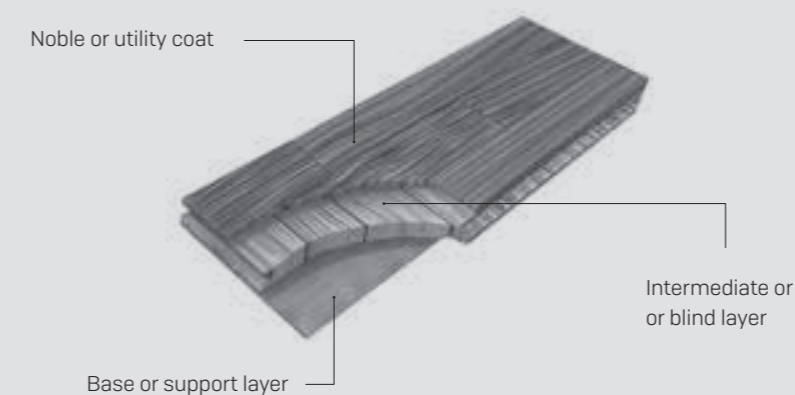
IMA SPORTIVE varnished sport flooring. Backing sport from the beginning. We provide the natural beauty and all the mechanical properties of wood for a sector that demands the highest quality standards. Available in 14 mm and now also the X-TREME 22 mm format. Robustness and balance at the service of the most demanding technical requirements.



Technical features

IMA Floating Floor comprises three fused 14 mm layers to provide the recognized warmth and durability of our product.

Construction of each board



The noble layer is the "visible" wood that supports use and brings beauty and warmth to the floating floor. Optimax Ceramic water-based varnish, the IMA exclusive finish that provides the best resistance on the market, is applied to this layer.

Noble layer thickness: ± 3.8 mm

The intermediate layer provides flexibility and cohesion to the whole. Formed by a conglomerate in of 8 mm conifer wood.

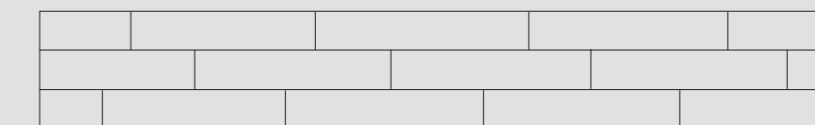
The base layer supports the other two and is in contact with the insulating layer. 2 mm coniferous wood.



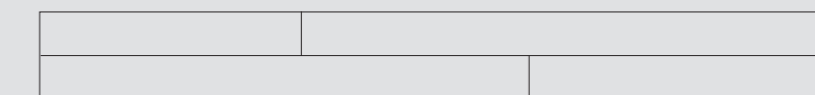
IMA Floating Floor Design

Variants

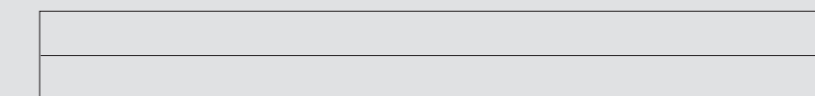
There are numerous configurations to adapt perfectly to each decorative style and the size of the space that you want to floor.



3 STRIPS: 1,995 × 190 mm. × 14 mm thick (noble layer ± 3.8 mm.)



2 STRIPS: 1,995 × 190 mm. × 14 mm thick (noble layer ± 3.8 mm.)



1 LAMA:

1,995 × 150 mm. × 14 mm thick (noble layer ± 3.8 mm.)

1,995 × 190 mm. × 14 mm thick (noble layer ± 3.8 mm.)

Features

Dimensions of the boards

- Length: $\lt; 1,995 \text{ mm}$.
- Width: **190 mm**
- Thickness: **14 mm**
- Width for ELEGANCE models : **150 mm**

Dimensional Tolerances of the boards

- Length: $\pm 0.2\%$
- Width: $\pm 0.2 \text{ mm}$
- Face curvature: **less than 1.9 mm.**
- Edge curvature: **less than 1.9 mm.**

Features of packages

- Number of PLATFORMS per BOX: **10.**
- Moisture content of the PLATFORMS: **$8\% \pm 1.$**
- Approximate weight: **30 kg**
- m^2 per box: **$3.8 \text{ m}^2.$**
- Approximate weight installed: **$8 \text{ kg}/\text{m}^2.$**
- m^2 per box ELEGANCE models * : **$3 \text{ m}^2.$**
- Approximate weight ELEGANCE models * : **27 kg**

Structure of the boards

- Noble layer: **Thickness $\pm 3.8 \text{ mm. approx. with different mosaic distributions.$**
- Blind or intermediate layer: **$\pm 8 \text{ mm boards finished in plywood for greater resistance of the tongue and groove joints.$**
- Base layer: **Water-repellent conifer layer of $\pm 2 \text{ mm.}$**

Commitment to quality

IMA products undergo a series of **controls** to ensure product quality and strength:

● Dimensional stability

Control in adverse humidity conditions.

● Abrasion resistance

Resistant to superficial wear caused by the transit of people and furniture.

● Resistance to domestic products

Flooring tested for resistance to various substances commonly used in the home (food, detergents, acids...).

● Hardness

The Monnin test evaluates the density of the wood, which is what makes it hard.

● Water based varnish resistance

Accelerated product cycle test to evaluate possible colour changes.

● Thermal conductivity

Controls to check the level of thermal insulation of the material.

● Impact resistance

Resists objects of different weights and at different heights.

● Noise insulation

IMA flooring laid over 1mm polyethylene foam provides 18 dBA noise reduction.

● Scratches

Force is applied with a diamond tip to evaluate the effect of scratching on the material.

● Formaldehyde emission

Component of wood adhesives considered toxic at certain levels. The official sanitary provision is demanding: IMA has class E1 of low emission (less than 8 mg per 100gr of product mass).



Optimax Ceramic

Pioneers in wood resistance treatment

35 years ago, IMA was the first manufacturer in the world to apply a water-based varnish to wood followed by up to six successive layers of acrylic varnish to achieve phenomenal resistance.

Optimax Ceramic water-based varnish is applied as the first layer in the varnishing process to ensure an ecological and flame retardant material.

Water impregnates the wood easily through its surface and with sophisticated technology this layer is stuck to the wood, thus achieving resistance to abrasion and scratching.

Once again we stand out from the rest

Optimax Ceramic has been improved by lowering the PH and obtaining an invisible resistance varnish. Thus we maintain the natural tone and feeling of the raw wood.

OPTIMAX

Environment

Sincere commitment to the environment.

IMA has the Sustainable Environmental Diagnosis (Spanish acronym: DMAS) Certificate, an advanced management system in attention to the social and environmental environment.

We share the vision of the DMAS certificate that requires a double environmental audit to comply with current legislation (UNE-EN-ISO 14001) and voluntary guidelines for the development of a sustainable commitment.

Ecological concerns mean that IMA must take the origin of the wood into account. We have an active social and environmental development plan in the Amazon communities with a double objective:

1.- Guarantee the ecologically sustainable forestry use of the Amazonian forests, through a strict inventory of trees and the control and limitation of logging.

2.- Guarantee the social development of the affected indigenous populations, with the implementation of specific intervention programs and infrastructure construction.

We collaborate with the Brazilian administration and non-governmental organizations such as Greenpeace in the development of the Amazonian community, building vocational schools to improve the education and future for the young.



Installation and maintenance

Ease and versatility of installation

One of the strengths of IMA flooring is the ease and versatility of installation: it only requires a flat surface and the absence of moisture. In addition, being a factory finished and varnished product, its quality, strength and uniformity are guaranteed.

Due to the possibilities of assembly, different adhesives, various heating systems, etc., a professional is required to give advice, after-sales service and installation guarantees.

To support this, IMA has published a series of recommendations for optimal installation.

BASIC TOOLS:

- Spirit Level
- Hand or vertical saw
- Wooden hammer
- Template or wooden block
- Lever for wall edges
- Tape measure and square
- Wooden wedges
- Tongue and groove adhesive
- Foam/polyethylene sheet
- Drill
- Gloves
- Pencil
- Adhesive (for gluing to ground)
- Adhesive pallet (for gluing to ground)



Due to the limitations of the physical and mechanical resistance of each species of wood, IMA recommends protecting the base of objects in contact with the floor (such as chairs, tables, wheels, etc...). Avoid contact with pointed objects or those with a reduced contact surface to avoid scratches, grooves or any other type of deterioration due to pressure that exceeds the normal resistance of the product.

Installation

1 BASE SLAB

We start from a level, clean slab with a humidity level appropriate to the installation.

Direct bonding can only be made on a suitably flat, firm and crack-free sub-floor, in accordance with general practice.

2 POLYETHYLENE FOAM

This is extended over the support in a direction perpendicular to that of the boards. This foam provides acoustic and thermal insulation.

When sticking, the ground must be sufficiently dry, hard and level.

3 LAYING

The installation commences in the corner of the room, usually parallel to the longest side, with the groove facing the wall. The tongues and grooves on the edges should also be glued.

A minimum separation of 50 cm is recommended. between joints and wedges should be placed along the wall joint maintaining a gap of 8 to 10 mm.

In glued to the ground installations there are no restrictions on length or width. It is still mandatory to place an expansion joint around the perimeter of the room in question.

4 SECOND ROW

Both the tongue of the 1st row and the groove of the 2nd row should also be glued.

In the glued installation, the first two rows will help you maintain a straight line when continuing with the rest of the installation.

5 FOLLOWING ROWS

We proceed successively with the following rows, using the wooden block and the hammer to secure the boards to each other.

6 CLEANING ADHESIVE

Using a damp cloth, wipe off any adhesive residue that may overflow the joints.

7 FINAL ROW

There is usually insufficient space left to place an entire board so they must be cut lengthwise. Room must also be left for the perimeter joint.

8 USE THE LEVER

We install the final row with the lever.

9 FINISHING AND TRIMS

Remove the wedges to free the expansion joint. Place the skirting boards over the expansion joint and the trims required where two different floors join.

After glueing, allow at least several hours for the adhesive to bond and stabilize before stepping on the floor.

Radiant floor installation

Wood has its own natural warmth unlike most petrous floors: it is already warm and comfortable. It complies with the coefficients of resistance and thermal transmission stipulated in the regulations. So IMA floating floor is also ideal for radiant floor heating (see suitable species).

For the heating system to work at full capacity, the floor must be in "intimate" contact with the heated floor. Before starting the installation, heating tests must be carried out at 2/3 power, to help set and dry the floor.

Wall installation

The installation of IMA floating floor on the wall is a natural evolution of the market due to the increased demand from companies and decoration professionals.

The warmth and naturalness of the IMA product is appreciable by home and contract and design professionals thanks to the versatility of its design. You can place the boards vertically or horizontally. To this is added the quantity and quality of species available to decorate unique spaces and the excellent thermal and acoustic insulation qualities of wood, which contribute to comfort and energy savings.

Maintenance

Natural behaviour

Wooden parquet/flooring is a natural material and this should be kept in mind to get the best out of it.

Wood is a hygroscopic material, that is, it absorbs or yields humidity from the environment according to the ambient hygrothermal conditions (humidity and temperature). The maintenance of normal conditions (temperature between 10 and 27° and relative humidity between 35 and 70%) will guarantee the optimal behaviour of the wooden floor.

The natural character of the wood and the protection of our Optimax Ceramic water-based varnish give IMA products extraordinary durability with basic maintenance. Regular cleaning may be done with a dry cloth, vacuum cleaner and damp cloth to remove stains.

If desired, its original beauty may be recovered after years of use with a light sanding and varnish.



Feel wood



This catalogue is an IMA Floating Floor publication. The company reserves the right to change at any time and without prior notice or commitment the name and specifications it deems necessary for the improvement of its products in the models.

The colours shown may vary slightly from the actual colours due to technical reasons associated with the process of photography and printing or for reasons of variation of tone and texture characteristic in wood.

Optimax and Optimax Ceramic are trademarks owned by Tarima Flotante IMA.



SINCE 1961

Ctra. Miranda-Treviño, km. 5,5 / 01212 Berantevilla (Álava) Spain
T. +34 945 33 72 04 E. ima@imagrupo.com
www.imagrupo.com

